



Graywater on Stanford Campus

Stanford Water Resources and Civil Infrastructure | July 2022

Visit suwater.stanford.edu/water-supplies/graywater for more info and for the Policy.

What is graywater?

Graywater is water from bathtubs, showers, bathroom sinks, and clothes washing machines. Wastewater from kitchen sinks, dishwashers, and toilets is not considered graywater in California.

Graywater use

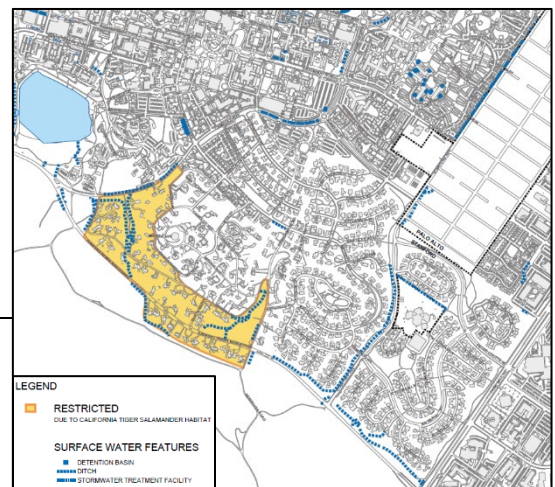
Graywater can be used to irrigate outdoor landscaping or for toilet flushing. The simpler systems like Laundry-to-Landscape require less maintenance, use less energy, and cost less. Graywater use can save water, energy & money!

Important facts

- Safety.** Graywater irrigation introduces household products into the soil. Residences with graywater systems should only use [products](#) that will not deteriorate plant health, or soil or groundwater quality (e.g., avoid products containing sodium, chlorine bleach, boron).
- Application process.** An application by at Stanford leaseholder must be submitted and approved prior to system installation. If Stanford approves the application, additional approval for the proposed graywater system from Santa Clara County and/or any other regulatory agency with jurisdiction over this activity may be required.
- Siting restrictions.** Graywater system outlets for irrigation must be at least 100 ft away from streams, lakes, drainage ditches, or other waterbodies, and may not be installed in areas where the depth-to-groundwater is less than five ft. Additionally, graywater irrigation is not allowed within the California Tiger Salamander Zone.

Plants that grow best with graywater

Some plant types that do well with graywater irrigation* include fruit trees, berries, shrubs and larger perennials and annuals. Common plant types not recommended to be irrigated with a graywater include edible parts of food crops that touch the soil (including root crops), turf grass, and highly sensitive plants.



Inform Your Gardener About Your Graywater System

Be sure to inform anyone who works in your yard about your new graywater system.

Rebates

Stanford leaseholders are eligible for up to a \$200 rebate from Valley Water for installing a graywater Laundry-to-Landscape system. Find out more at: <https://www.valleywater.org/saving-water/rebates-surveys/graywater-rebate>.

* See the San Francisco Graywater Design Manual [Appendix D](#) for additional information on What to Irrigate with Graywater and How Much Water to Use and the [Greywater Action website](#).