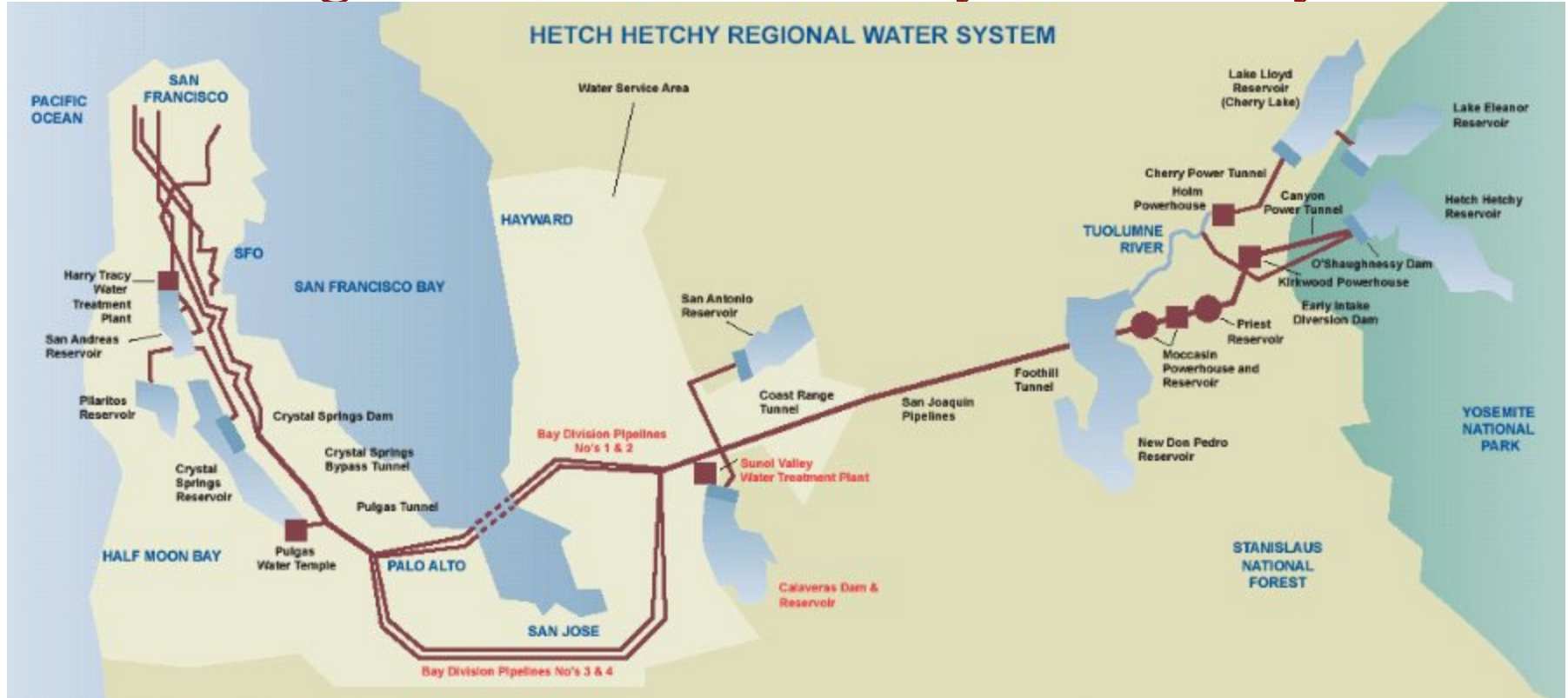


# Water Resources & Civil Infrastructure Group JSB Greenbelt Trees Removal for SFPUC Pipelines

Senior Director Tom W. Zigterman, P.E., D.WRE

November 11, 2025

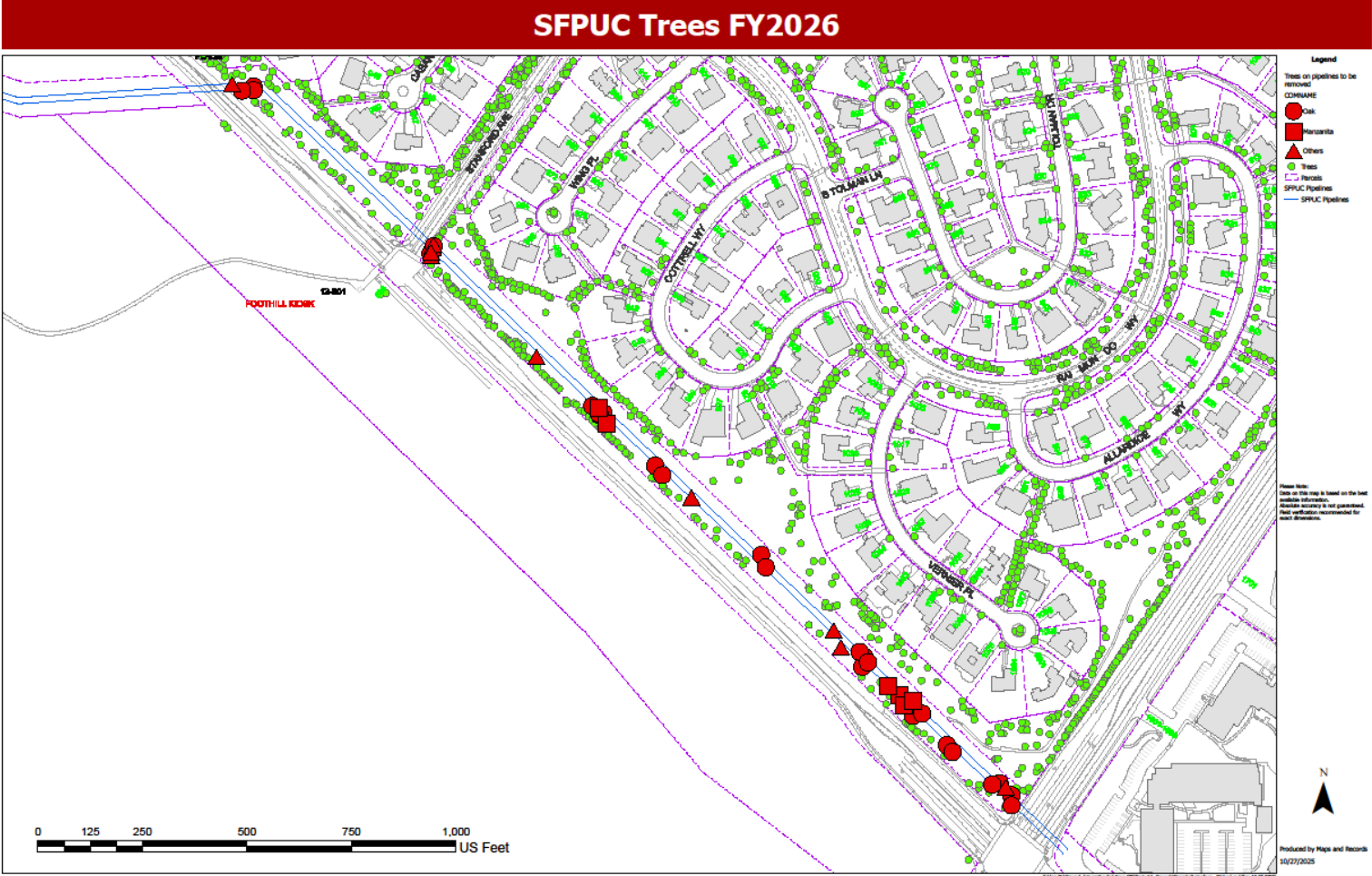
# SFPUC Regional (“Hetch-Hetchy”) Water System



# Tree Removal Explanation

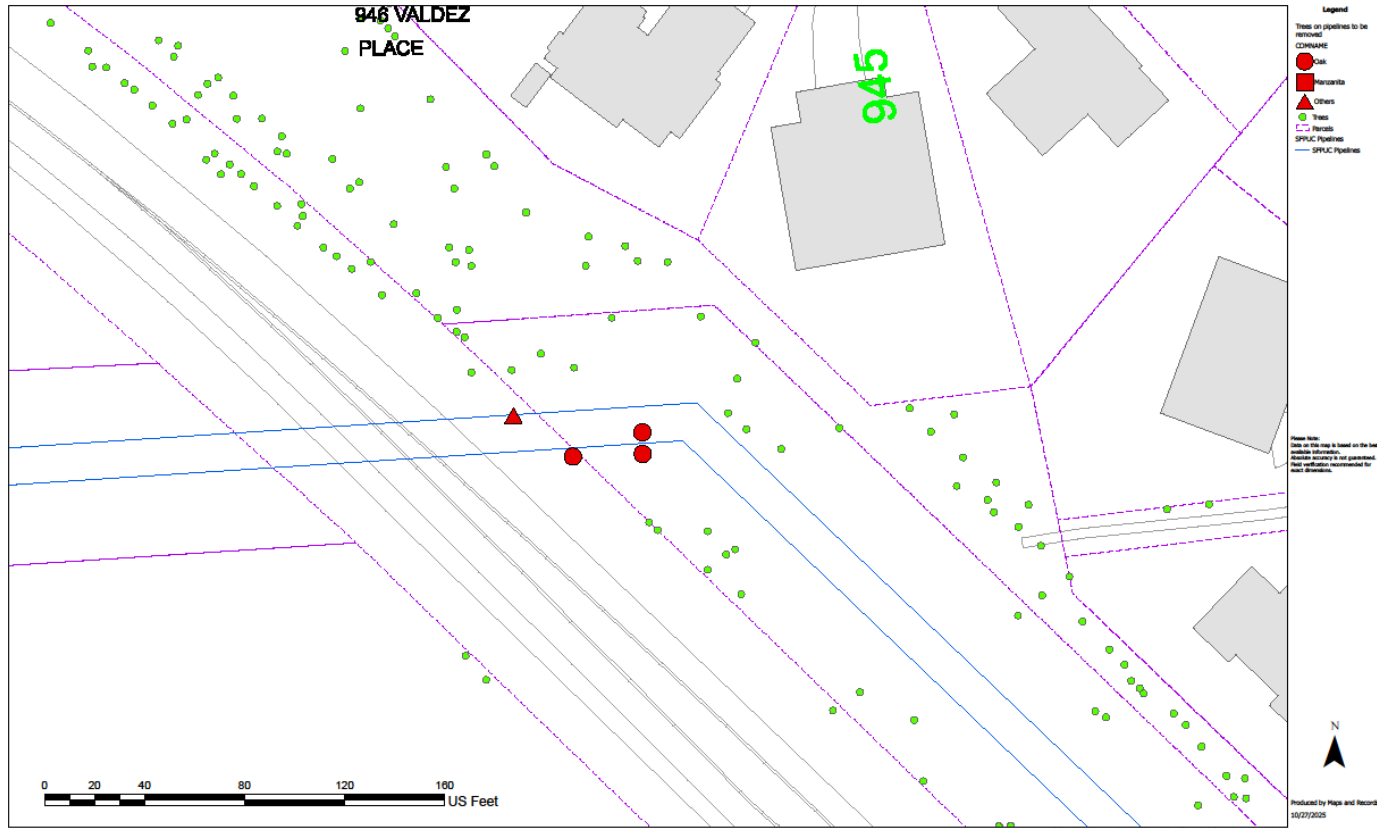
- SFPUC's Regional Water System pipelines extend through the Stanford area on their way to Crystal Springs Reservoir
- SFPUC owns the parcel of land through the greenbelt containing the pipelines
- Stanford is obligated to maintain the parcel and its vegetation
- Trees overlying the pipelines are being removed to comply with this obligation

# Overview – Trees to be Removed (in Red)



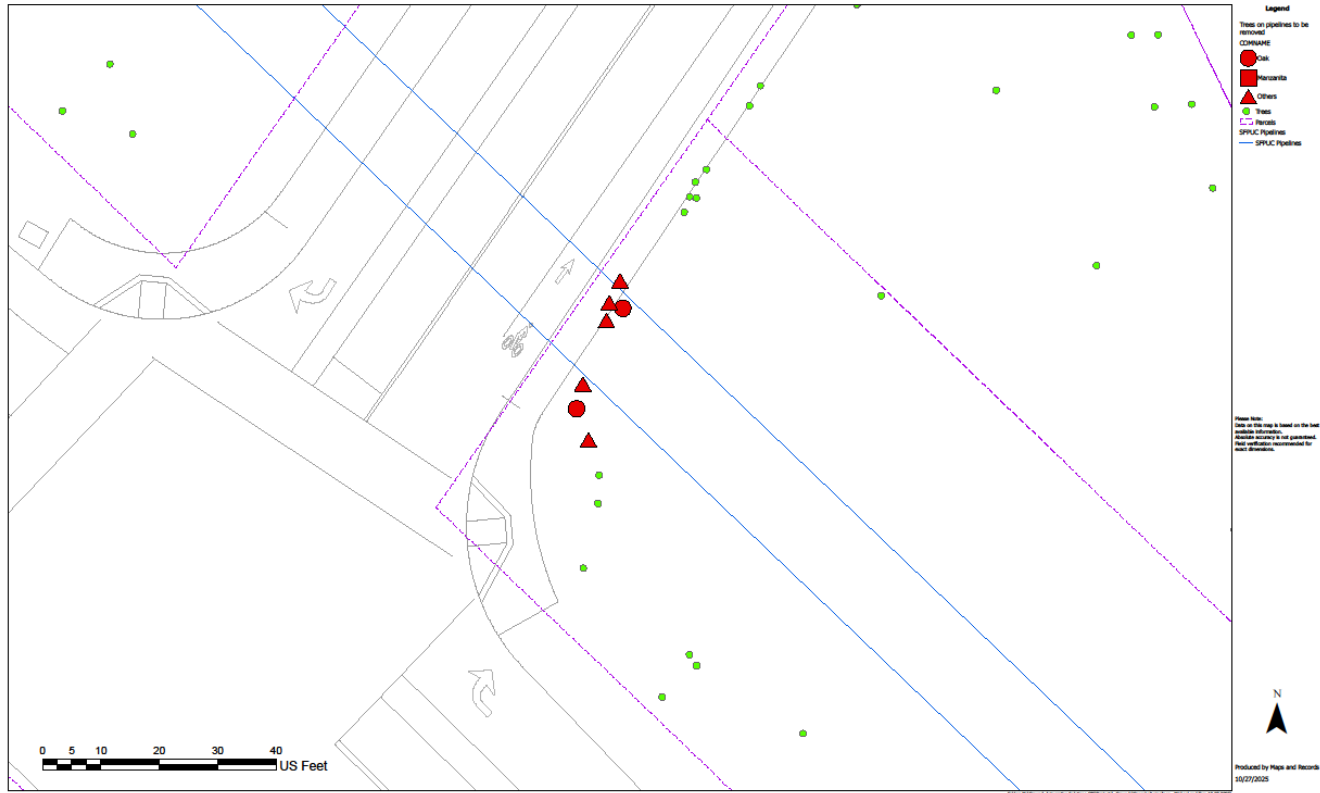
# Trees to be Removed - 1

## SFPUC Trees FY2026



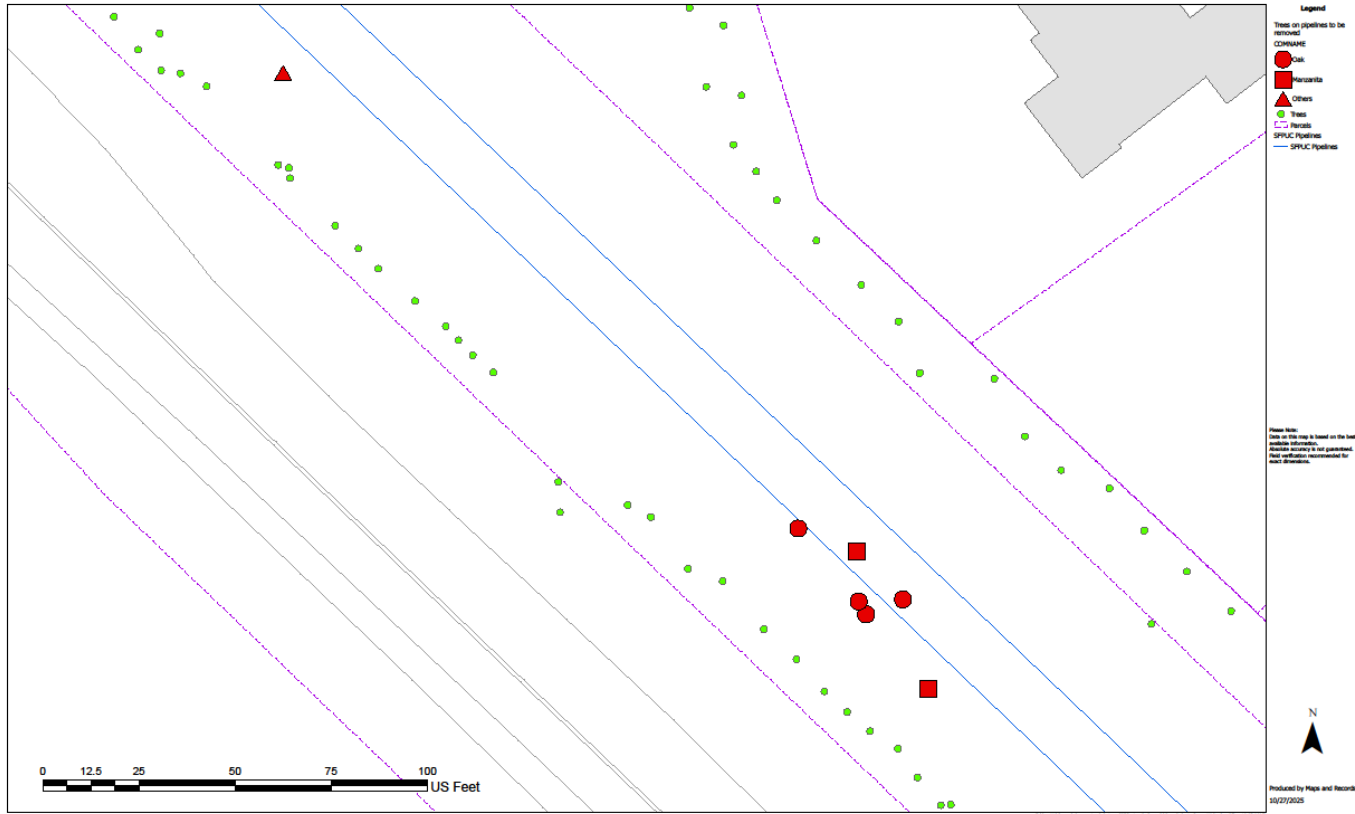
# Trees to be Removed - 2

## SFPUC Trees FY2026



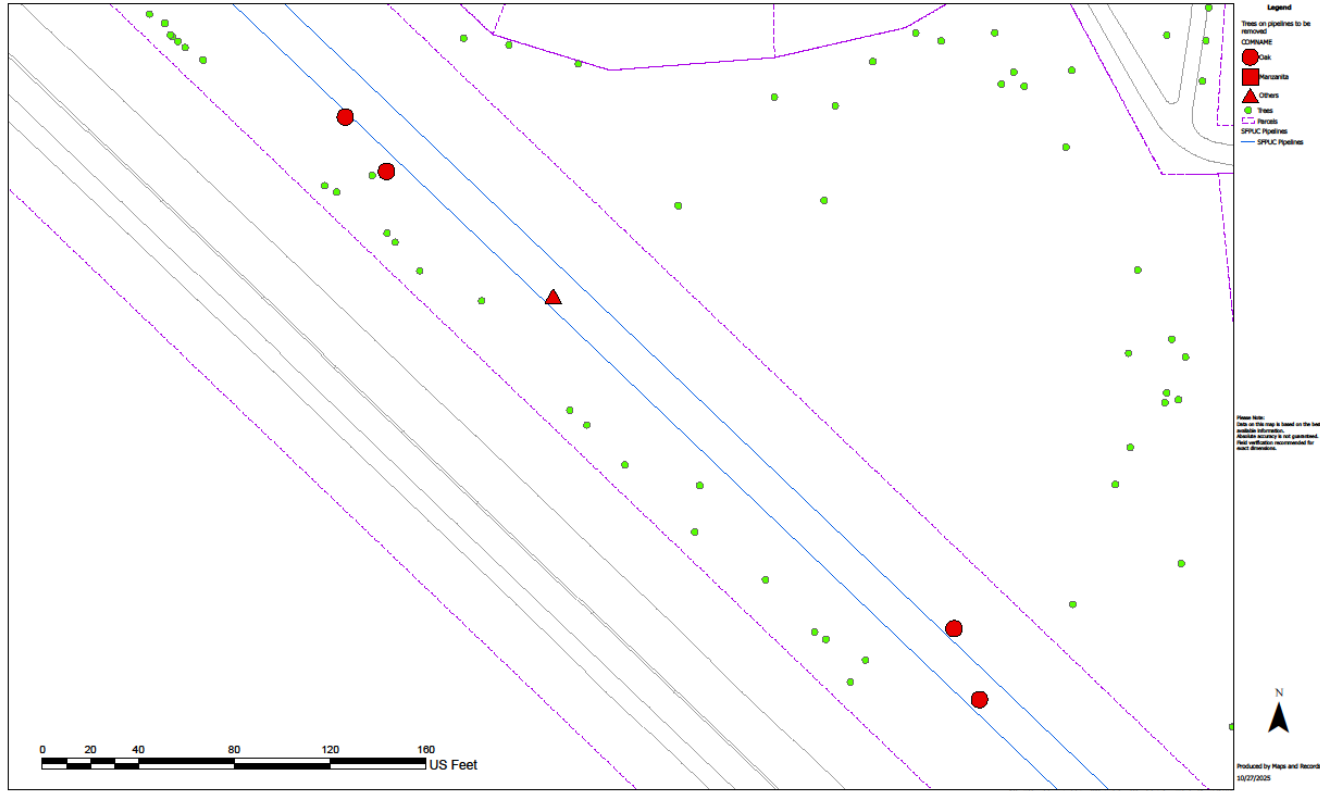
# Trees to be Removed - 3

## SFPUC Trees FY2026



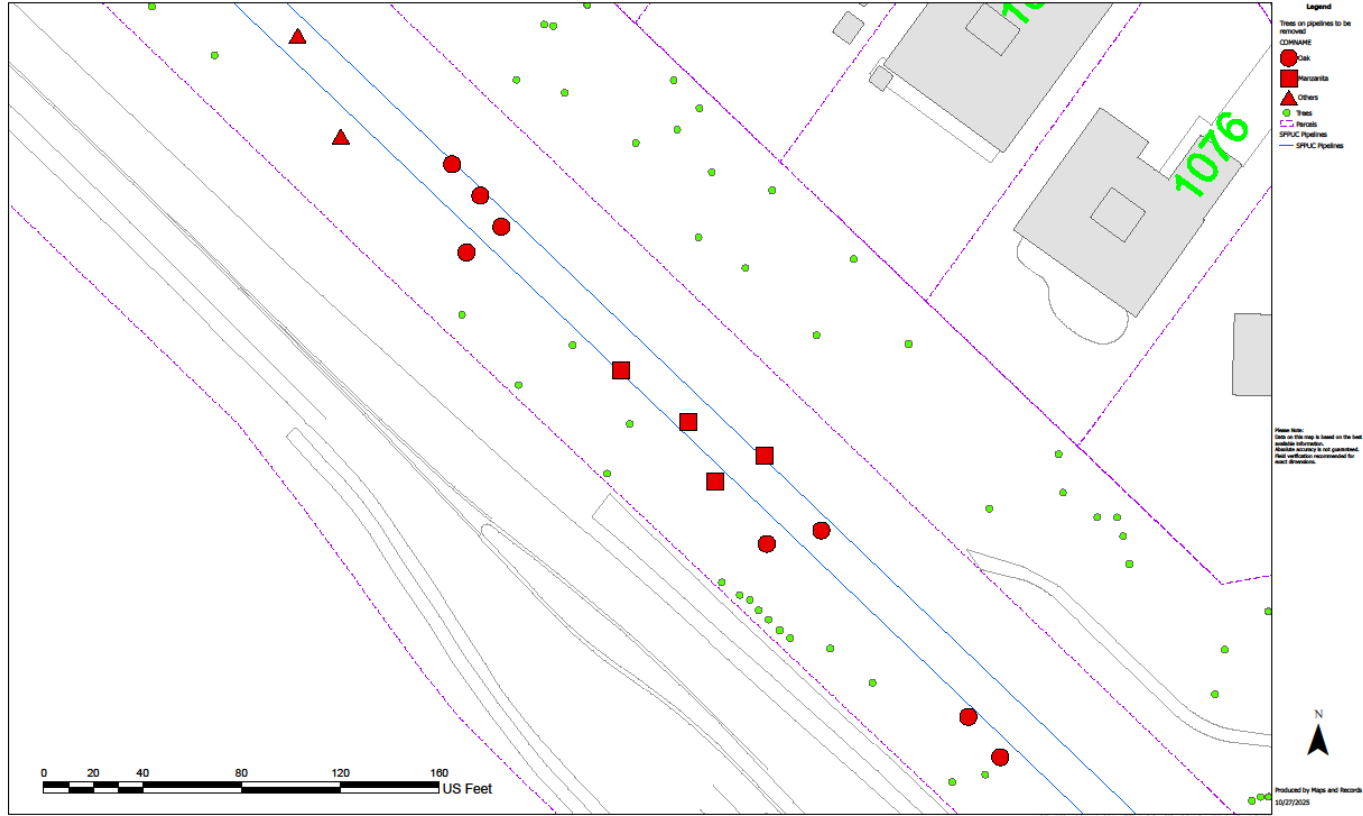
# Trees to be Removed - 4

## SFPUC Trees FY2026



# Trees to be Removed - 5

## SFPUC Trees FY2026



# Trees to be Removed - 6

## SFPUC Trees FY2026

